

# Cosyfeet®

AUTUMN/WINTER 2022



STOCKISTS' COLLECTION  
**extra roomy** FOOTWEAR, SOCKS & HOSIERY

# Welcome to Cosyfeet

## Stockists' collection



## SEASONAL COLOUR & COMFORT

Our autumn/winter collection is bursting with new colours and styles. Whether you're heading out and about or looking to stay warm and comfortable at home we've got it covered. Look out for new styles Mimi (*pg10-11*), Hayley (*pg30*) & Ned (*pg67*).



**Joanna Trevena**  
Head of Product & Merchandising

P.S. Don't forget about our great range of premium-quality socks and hosiery for the complete comfort package!

## ABOUT COSYFEET STOCKISTS

Cosyfeet stockists are independent businesses who buy and re-sell our products. We leave it to them to decide what to stock although most will be happy to order in any item you see in this catalogue. If you purchase from a stockist your contract will be with the retailer and subject to their terms of business, including their returns policy.

**The Cosyfeet NO QUIBBLE MONEY BACK GUARANTEE does not apply to purchases made through stockists.**

Some stockists may be able to offer VAT Relief on footwear if you have a qualifying medical condition. Please contact them for further information. Any queries regarding your rights under the General Data Protection Regulations should be directed to the stockist.

Because we are continually improving and developing our range there may be some slight variations to the specifications and colours shown in this catalogue. Cosyfeet reserve the right to withdraw or alter the specification or price of a product without prior notification.

# Cosyfeet<sup>®</sup> extra roomy

*"I can't believe I finally  
have shoes wide enough  
for my swollen feet."*

FEEFO REVIEW



WOMEN'S FOOTWEAR  
**6E**  
extra roomy  
FITTING

MEN'S FOOTWEAR  
**3H**  
extra roomy  
FITTING

## *What makes our footwear so special?*

**There's wide fitting and then there's Cosyfeet!**

Specially designed to fit and flatter swollen feet, our footwear is much wider, deeper and roomier than the wide-fitting footwear you'll find on the high street. We are a small, caring company with 39 years' experience of fitting swollen feet and legs.

- Exceptionally wide, deep & roomy – but look like 'normal' shoes
- Very adjustable – fit a range of swelling
- Easy to get on & off swollen feet
- Can also fit bunions, problem toes, orthotics & bandaging

FIND  
OUT  
MORE ➤

# WHERE QUALITY & STYLE MEETS BLISSFUL COMFORT

We believe that swollen feet should have the most comfortable, stylish footwear possible. That's why we combine the latest trends with premium materials, expert shoemaking and advanced foot comfort technology. Thanks to innovations such as our 'hidden depth' design, our footwear fits swollen feet with ease but still looks stylish and streamlined.

## ENDORSED BY UK EXPERTS

Cosyfeet comes highly recommended by a number of healthcare professionals including podiatrists, foot health practitioners and occupational therapists from across the UK. We are also recognised by the Healthy Footwear Guide, a collaboration between UK footwear brands and foot health professionals.



## IS COSYFEET RIGHT FOR YOU?

Cosyfeet is specially designed to fit swollen feet. Some styles can also fit bunions, problem toes and bandaging. All our footwear has the same extra roomy width fitting (6E for women and 3H for men). Don't worry if you don't know your width fitting, most of our styles are adjustable and can cope with a range of foot shapes and swelling. To put it simply, if you have swollen feet and you can't find footwear to fit, we can probably help.

## Look out for our product features...



HIDDEN  
DEPTH



DIABETIC  
FRIENDLY



STRAP EXTENSIONS  
AVAILABLE



MADE IN  
BRITAIN

## DO I NEED TO TAKE CARE IF I HAVE DIABETES?



Yes. We are aware of the problems that people with diabetes may have and so we offer footwear and socks with minimal seaming. However, not all our products may be suitable for your feet, so you need to make your own judgement or ask a medical advisor. Please run your fingers inside any item before wearing, checking for anything that may harm. After buying new footwear, wear it for 30 minutes to 1 hour at first, then inspect your feet for pressure marks or irritation. A hand mirror is useful so you can examine your whole foot. Gradually build up the wearing time. For more information visit [diabetes.org.uk](http://diabetes.org.uk)

## WHAT SIZE DO I NEED?

Most customers find that the shoe size they wore before experiencing swelling (e.g size 6) is wide and deep enough to provide the extra room they need. If we don't offer a half size in the style you want we recommend you try the smaller full size.

## STRAP EXTENSIONS



STRAP  
EXTENSIONS  
AVAILABLE

If your feet are especially swollen, we can supply matching strap extensions to lengthen the straps on most touch-fastening styles. All strap extensions are £4.80 per pair (without VAT £4).

## OUR SOCKS & HOSIERY

Whether you're affected by arthritis, swelling or diabetes or just looking for exceptional comfort, you'll find socks and hosiery to meet your need. Look out for our exclusive extra roomy products which are specially designed to fit swollen feet and legs. We also have a range of seam-free, diabetic-friendly socks.



# WOMEN'S FOOTWEAR

ALL OUR WOMEN'S STYLES  
ARE **extra roomy**  
6E FITTING

WOMEN'S FOOTWEAR  
5-52



MEN'S FOOTWEAR 53-79



SOCKS 80-88



HOSIERY 89-95



# Julia

Warm and comfy in equal measures, this boot is a firm favourite. Featuring a soft, stretchy elastane front which won't put pressure on painful toes, joints or swelling. The back section is made from leather to ensure adequate support around the ankle. This versatile boot looks great with boot-cut trousers or jeans for a stylish, seasonal look.

**Sizes: 3 – 9** • Half sizes available

**extra roomy** 6E fitting

**Code UC**

**£89**

**£74.17** without VAT



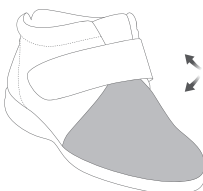
HIDDEN  
DEPTH



DIABETIC  
FRIENDLY



STRAP EXTENSIONS  
AVAILABLE



**STRETCHY  
ELASTANE**

**Loganberry**  
Leather/  
Elastane



**Navy**  
Leather/  
Elastane



**Black**  
Leather/  
Elastane



# SMART, ROOMY & EASY TO GET ON

- > Cushioned Sanitized® insole can be removed to fit an orthotic
- > Touch-fastening strap adjusts to fit swelling



## Luana

Crafted from hand-polished leathers, this flattering boot opens right out so it's easy to put on a swollen foot. The nubuck strap features a scalloped edge for a stylish touch, and is adjustable for a custom fit. With a deep, seam-free front for problem toes, the padded collar provides stability and support. A soft, cushioned lining cossets your feet in comfort while the cushioned insole feels fabulous underfoot.

**Sizes: 3 – 9\***

Half sizes available from 4½ to 8½

**extra roomy** 6E fitting

**Code LL**

**£92**

**£76.67** without VAT



HIDDEN  
DEPTH



DIABETIC  
FRIENDLY



STRAP EXTENSIONS  
AVAILABLE

*\*Size 3 only available in Claret & Black*



Claret Leather



Navy Leather



Black Leather

# Megan

Thanks to the stylish design and 'hidden depth', you wouldn't know these gorgeous boots are specially designed to fit swollen feet. Lightweight and easy to get on, the soft, supple leather moulds to your foot while the antique-effect sole gives a contemporary, premium look. The sumptuous underfoot cushioning, padded collar and tongue, and faux fur lining make this an exceptionally comfy and cosy boot.

**Sizes: 4 – 9** • Half sizes available

**extra roomy** 6E fitting

**Code VX**

**£95**

**£79.17** without VAT



HIDDEN  
DEPTH



DIABETIC  
FRIENDLY



**Blue  
Bouquet  
Leather**



**Damson  
Nubuck**



**Black  
Nubuck**



# SOFT, SEAM-FREE & SEASONAL

- > Seam-free toe for added comfort
- > Sole is flexible, shock-absorbing & hard-wearing
- > Faux fur lining for added warmth
- > Cushioned Sanitized® insole can be removed to fit an orthotic

NEW  
COLOURS



**Marigold**  
Nubuck

NEW



**Black**  
**Cobalt**  
**Rose**  
Leather

NEW



**Autumn**  
**Floral**  
Leather



**Cocoa**  
Nubuck



## Martha

A contemporary, casual boot, boasting a seam-free toe and a faux fur lining to cosset the most sensitive of feet in comfort. The simple touch-fastening allows for a good opening for foot access, accommodating moderate swelling, and providing an adjustable fit around the upper foot.

**Sizes: 4 – 9 • Half sizes available**

**extra roomy** 6E fitting

**Code HE**

**£95**

**£79.17** without VAT



HIDDEN  
DEPTH



DIABETIC  
FRIENDLY



STRAP EXTENSIONS  
AVAILABLE



# EASY ACCESS, EVERYDAY STYLE

- > Double zip fastenings make it easy to get on & off
- > Cushioned Sanitized® insole can be removed to fit an orthotic
- > Hand-brushed, antique-effect sole gives a premium look (Sapphire Blue & Autumn Floral only)
- > Lace adjusts to fit a range of swelling



## New Mimi

This stylish, contemporary boot features a double zip fastening for ultra-easy access – once the laces are adjusted for your fit, you can slip them on and off with ease. With a soft, cushioned collar and on-trend cup sole these everyday boots are both smart and practical for cooler days.

**Sizes: 4 – 9 • Half sizes available**  
**extra roomy** 6E fitting

**Code MIM**

**£99**

**£82.50** without VAT



**Sapphire Blue Nubuck**



**Black Leather/Suede**



**Autumn Floral Leather**

# EMBRACE THE ELEMENTS



- Deep collar offers additional stability around the ankle
- Waterproof lace adjusts to fit a range of swelling
- Seam-free toe area is great for problem toes

## Moose

Enjoy the great outdoors with our 100% waterproof boot. Made from water-repellent nubuck combined with our breathable, windproof and waterproof CosyTex™ membrane to keep feet fresh, warm and dry. With a terrain-friendly, cleated sole for good grip, that is also shock-absorbing for extra comfort. The soft, felt collar and hiking-inspired hook fastenings are both functional and stylish.

**Sizes: 4 – 9 • Half sizes available**  
**extra roomy 6E fitting**

**Code MSE**

**£115**

**£95.83** without VAT



**Winter Red Nubuck**



**Cocoa Nubuck**



**Charcoal Nubuck**

## HIGH-PERFORMANCE MOOSE

Designed for more challenging conditions, this high-performance waterproof style has a special 'self-clearing' tread that works extremely well in mud, ice and snow.

**Graphite  
Waxed Leather**



**Code MSX £120 £100** without VAT

- > Soft, padded collar & tongue for greater comfort
- > Seam-free toe area is ideal for problem toes
- > Cushioned footbed can be removed to fit an orthotic

**CosyTex™**

**Maisie  
Dijon  
Waxed  
Leather**

**Maisie  
High-Performance  
Winter Red  
Waxed Leather**

**Maisie  
Charcoal  
Nubuck**

## Maisie

Designed for walking and able to fit a swollen foot, this 100% waterproof shoe is perfect for those looking for comfort and support. The uppers are made from breathable, windproof and waterproof CosyTex™ to keep feet dry and protected and you can choose from our cleated sole or our "High-Performance" version which has a special 'self-clearing' tread that works well in mud, ice and snow.

**Sizes: 4 – 9 • Half sizes available**  
**extra roomy 6E fitting**

**Maisie**

**Code MAI**

**£110 £91.67** without VAT

**Maisie High-Performance**

**Code MAH**

**£115 £95.83** without VAT



HIDDEN  
DEPTH



STRAP  
EXTENSIONS  
AVAILABLE



DIABETIC  
FRIENDLY



## OUR SPORTS PERFORMANCE RANGE

- > Moisture-wicking & breathable footbed
- > Breathable, seamless lining throughout
- > The breathable mesh upper is flexible & supportive
- > Heel specifically designed to give excellent stability
- > Lace & strap fastenings adjust to fit swelling

*“Sporty, modern and super comfortable all around my foot. The amazing underfoot support gives me a spring in my step all day long.”*

LIZ - COSYFEET  
SHOP MANAGER  
AND FITTING EXPERT

**Viva**  
Navy  
Mesh/  
Leather



**Vamos**  
Black  
Mesh/  
Leather



**Viva White**  
Mesh/Leather

**Vamos Navy**  
Mesh/Leather

**Viva Black**  
Mesh/Leather



## Viva & Vamos

Developed alongside researchers from the University of Exeter, our Sport Active™ collection is a range of specially designed sports shoes for those with a more active lifestyle. They feature a double density sole for excellent underfoot cushioning and are engineered to provide enhanced grip and durability. The upper has been styled to give a high level of support and stability using materials selected to allow stretch and freedom for optimum foot comfort. Viva and Vamos boast all the necessary performance attributes for active sport for older feet, without compromising on our superior extra roomy comfort.

**Sizes: 4 – 9**

Half sizes available

**extra roomy** 6E fitting

**Viva**  
**Vamos**

**Code VI**  
**Code VO**

**£99**

**£82.50** without VAT



DIABETIC  
FRIENDLY



STRAP  
EXTENSIONS  
AVAILABLE \*

**SPORT  
ACTIVE™**

**WITH DOUBLE  
DENSITY SOLE**

Shock-absorbing high-density  
foam footbed minimises  
impact on joints

Stretchy & flexible material  
conforms to the shape of the foot



Sole provides lateral support without compromising on underfoot flexibility

*\*Strap extensions available for Vamos only*

# Jo-Jo

Crafted from beautifully soft, premium leathers, this fashionable lace-up gives you high-street style along with fabulous comfort and a flexible fit.

A wardrobe staple, it looks great with everything; from dresses to tailored trousers to your favourite pair of jeans.

**Sizes: 4 – 9** • Half sizes available

**extra roomy** 6E fitting

**Code QT**

**£89**

**£74.17** without VAT



HIDDEN  
DEPTH



DIABETIC  
FRIENDLY

**Black  
Cobalt  
Rose  
Leather**



**Navy  
Floral  
Elastane/  
Leather**



**Luna  
White  
Leather**



**Jet Black  
Leather**



**Sunflower  
Leather**



# FABULOUS COMFORT, FLEXIBLE FIT

- > Touch-fastening straps adjust to fit swelling
- > Lined with soft, breathable fabric for greater comfort
- > Cushioned Sanitized® insole can be removed to fit an orthotic



*"Comfortable, stylish  
and great value."*

FEEFO REVIEW

## Gigi

Softly padded in all the right places, this trendy, premium leather style is exceptionally comfy. The twin touch-fastening straps adjust to fit swelling while the wide opening makes it easy to slip on and take off. The seam-free front, breathable lining and cushioned insole add the finishing touches to this stylish shoe.

**Sizes: 4 – 9** • Half sizes available

**extra roomy** 6E fitting

**Code QI**

**£89**

**£74.17** without VAT



HIDDEN  
DEPTH



DIABETIC  
FRIENDLY



STRAP EXTENSIONS  
AVAILABLE

**Blue  
Bouquet  
Leather**



**Black  
Cobalt  
Rose  
Leather**



**Navy  
Leather**



**Black  
Nubuck**



# OUR EXTRA DEEP PROBLEM SOLVER

> Cushioned footbed can be removed to fit an orthotic

> Ideal if you have diabetes or sensitive feet



Taupe  
Leather

Mink  
Leather

## Alison

Our best-selling, ultra-adjustable shoe fits a variety of tricky feet. Made on our deepest last, from beautifully soft leathers, it's very generous across the front so it's ideal if you need extra room for bunions or problem toes. Even if you're bandaged or very swollen across your foot it's really easy to put on, because it opens right out. With underfoot cushioning and a seam-free lining, it's pure bliss for sensitive feet.

bestseller

- > Shock-absorbing footbed adds stability to the foot & ankle
- > Seam-free, sanitised lining allows your feet to breathe
- > Extra deep toe area is great for problem toes & bunions



Claret  
Leather

Lagoon  
Leather

Black  
Leather

**Sizes: 3 – 10\*** • Half sizes available from 3½ – 8½ • **extra roomy** 6E fitting

**Code UD £89 £74.17** without VAT



HIDDEN  
DEPTH



STRAP EXTENSIONS  
AVAILABLE



DIABETIC  
FRIENDLY

\*Size 10 only available in Mink and Black

ALL OUR WOMEN'S FOOTWEAR IS **extra roomy** 6E FITTING

# CONTEMPORARY CASUALS

CUSHION  
**ACTIVE™**

- Zip-fastening makes it easy to get on & off
- Cushioned textile lining cossets your feet
- Comfort footbed can be removed to fit an orthotic



*"I like the comfort  
and look."*

FEEFO REVIEW

## Tango

In a choice of fabulous premium leathers, this stylish shock-absorbing shoe combines comfort with convenience. The comfort footbed cushions every step so knee and ankle joints are protected, while the contemporary zip fastening makes it easy to get on and off. Once the laces are adjusted to your liking, you can slip it on in seconds!

**Sizes: 4 – 9 • Half sizes available**  
**extra roomy** 6E fitting

**Code KF**

**£92**

**£76.67** without VAT



**Navy Floral Nubuck/Elastane**



**Olive Shimmer Leather**



**Silver Grey Nubuck/Leather**



# Darcy

This classic style fits a range of foot shapes and swelling and has a deep, seam-free toe box so it's ideal for problem toes. The padded collar fits both swollen and slimmer ankles while the touch-fastening strap adjusts to fit a range of swelling. To complete your comfort, it has a cushioned Sanitized® insole that can be removed to fit an orthotic.

**Sizes: 3 – 9 • Half sizes available**

**extra roomy** 6E fitting

**Code QP**

**£89**

**£74.17** without VAT



HIDDEN  
DEPTH



DIABETIC  
FRIENDLY

**Claret**  
Leather/  
Suede



**Navy**  
Leather/  
Suede



**Stone**  
Leather/  
Suede



**Black**  
Leather/  
Suede





# SUPPORT WITH STRETCH

- > Stretchy upper that moulds to your feet
- > Coated with fabric protector so stain & water-resistant
- > Soft, padded collar for extra comfort & support
- > Cushioned Sanitized® insole can be removed to fit an orthotic



STRETCHY  
ELASTANE

## Karena

This style is a great choice if your feet are swollen or misshapen as it accommodates a variety of foot shapes. Boasting a deep and roomy toe area with an elastane stretch front that is sympathetic to sensitive toes or joints, as well as a touch-fastening strap that allows for an adaptable fit.

**Sizes: 3 – 9** • No half sizes available

**extra roomy** 6E fitting

**Code OU**

**£82**

**£68.33** without VAT



HIDDEN  
DEPTH



DIABETIC  
FRIENDLY



STRAP EXTENSIONS  
AVAILABLE

**Black  
Paisley  
Leather/  
Elastane**



**Loganberry  
Leather/  
Elastane**



**Navy  
Leather/  
Elastane**



**Taupe  
Leather/  
Elastane**



**Black  
Leather/  
Elastane**



# Sienna

Ideal if your feet are swollen or sensitive, this soft, stretchy shoe won't put pressure on painful joints or swelling. It's perfect for problem toes, thanks to the deep toe box and it's supportive around the heel. The flexible soles are hard-wearing so it's great for active feet.

**Sizes: 3 – 9** • No half sizes available

**extra roomy** 6E fitting

**Code US**

**£82**

**£68.33** without VAT



HIDDEN  
DEPTH



DIABETIC  
FRIENDLY

➤ Secure lace-fastening  
adjusts for a flexible fit

**Taupe**  
Leather/  
Elastane



**Navy**  
Leather/  
Elastane



**Black**  
Leather/  
Elastane



STRETCHY  
ELASTANE

# Patty

This lightweight, extra roomy boot is made from soft, stretchy elastane and will fit very swollen feet and ankles as well as bandaged feet and legs. The style opens right out for easy foot access and the removable, odour-resistant insole makes it easy to insert your own orthotic.

**Sizes: 3 – 9**

No half sizes available

**extra extra roomy** fitting

**Code VY**

**£105**

**£87.50** without VAT



HIDDEN  
DEPTH



STRAP EXTENSIONS  
AVAILABLE



DIABETIC  
FRIENDLY

➤ Stretchy elastane is  
coated with fabric  
protector so stain  
& water-resistant

**Black**  
Elastane/  
Leather



STRETCHY  
ELASTANE

# STRETCHY WHERE YOU NEED IT

- > Cushioned Sanitized® insole can be removed to fit an orthotic
- > Touch-fastening strap adjusts to fit swelling
- > Deep, seam-free front is great for problem toes



STRETCHY ELASTANE

## Laura

The soft, stretchy elastane panels on this flattering shoe gently flex to fit swelling and bunions with ease. The touch-fastening strap adjusts to fit a range of swelling while the super-soft lining and cushioned insole cradle your feet in comfort.

**Sizes: 3 – 9** • No half sizes available

**extra roomy** 6E fitting

**Code CK**

**£79**

**£65.83** without VAT



HIDDEN DEPTH



DIABETIC FRIENDLY



STRAP EXTENSIONS AVAILABLE

**Loganberry Floral**  
Leather/  
Elastane

NEW



**Black Floral**  
Leather/  
Elastane

NEW



**Stone Floral**  
Leather/  
Elastane



**Navy Floral**  
Leather/  
Elastane





## Audrey

For extra comfort and protection, the deep, roomy toe area has a soft, seam-free lining so there's nothing to rub or irritate. Cleverly designed so swollen feet look dainty and deep enough to fit a fairly large orthotic.

**Sizes: 3 – 9** • *Half sizes available*  
**extra roomy** 6E fitting

**Code CU**

**£85**

**£70.83** without VAT



HIDDEN  
DEPTH



STRAP EXTENSIONS  
AVAILABLE



DIABETIC  
FRIENDLY

**Mocha**  
Leather



**Lipstick**  
Red  
Leather



**Navy**  
Leather



**Black**  
Leather



# EASY ELEGANCE

- > Seam-free toe area is ideal for problem toes
- > Cushioned Sanitized® insole can be removed to fit an orthotic
- > Heel height 3.2cm (1¼")



## Maggie May

Our classic dolly shoe Maggie May features a wedge sole making it perfect for casual wear and dressy occasions alike. With a lower cut at the front, it's ideal if you swell across the top of your foot or down to your toes. For tailor-made comfort that lasts all day, simply adjust the touch-fastening strap. Sumptuously soft leathers and nubucks complete the look.

**Sizes: 3 – 9**

Half sizes available from 4½ to 8½

**extra roomy** 6E fitting

**Code QO**

**£85**

**£70.83** without VAT



HIDDEN  
DEPTH



DIABETIC  
FRIENDLY \*



STRAP EXTENSIONS  
AVAILABLE

**Lipstick  
Red  
Leather**



**Black  
Marble  
Snake  
Leather**



**Safari  
Leather**



**Sapphire  
Blue  
Nubuck**



**Black  
Leather**



\*Care is recommended with this low-cut style

# Paradise

Part shoe, part sandal, this 'on-trend' style keeps feet cool but protected so you can wear it all year round. Made from soft leather, it's very accommodating and has a deep, seam-free toe area so it's great for problem toes. The adjustable touch-fastening strap and removable insole help ensure a perfect fit.

**Sizes: 3 – 10\***

Half sizes available from 3½ – 8½

**extra roomy** 6E fitting

**Code UF**

**£82**

**£68.33** without VAT



HIDDEN  
DEPTH



STRAP EXTENSIONS  
AVAILABLE



DIABETIC  
FRIENDLY

\*Size 10 only available in Stone & Black

**NEW**



**Marigold**  
Nubuck



**Ocean**  
Leather/  
Nubuck



**Stone**  
Leather



**Black**  
Leather



# A DRESSY SHOE WITH A SECRET!

- > Fabric-lined for slipper-soft comfort
- > Seam-free toe for extra comfort
- > Cushioned Sanitized® insole can be removed to fit an orthotic



*bestseller*

## Carmen

One of our favourite dressy shoes, Carmen features a discreet touch-fastening strap with decorative button that opens up to reveal a fabric gusset. This gusset gently stretches to accommodate swollen feet, to provide greater comfort and a better fit. Our elastane versions have a stretchy front that won't put pressure on swollen or sensitive toes. Both options look great with any formalwear.

**Sizes: 4 – 9 • Half sizes available**  
**extra roomy** 6E fitting

**Code QC**

**£79**

**£65.83** without VAT

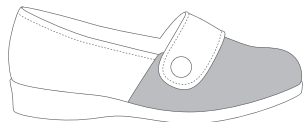
**Black  
Croc Print  
Patent**



**Taupe  
Leather**



  
**STRETCHY  
ELASTANE**



**Black  
Leather/  
Elastane**



**Navy  
Leather/  
Elastane**



# DAINTY & ELEGANT



- > Soft collar for extra comfort & support
- > Touch-fastening strap adjusts to fit a range of swelling
- > Cushioned Sanitized® insole can be removed to fit an orthotic
- > Heel height 3.2cm (1¼")

## New Hayley

Give your look a lift with our flattering new T-bar style. The adjustable touch-fastening strap makes it easy to find the perfect fit. Pretty cut-out detailing provides discreet breathability, while the padded collar ensures ultimate comfort for swollen ankles. Finished on a slight wedge heel, making it an ideal dressy style.

Sizes: 4 – 9 • Half sizes available  
**extra roomy** 6E fitting

Code **HLY**

**£82**

**£68.33** without VAT



HIDDEN  
DEPTH



DIABETIC  
FRIENDLY



STRAP EXTENSIONS  
AVAILABLE



Black Patent



Black Marble Snake Leather



Navy Leather

# Harriet

This modern take on the timeless Mary-Jane style, hides depth and width beautifully under the slim touch-fastening strap and delicate scalloped detailing. The flexible yet hard-wearing sole features a stylish wedge for those seeking Cosyfeet comfort with a slight heel, and the padded collar fits both swollen and slimmer ankles.

- Soft collar for extra comfort & support
- Touch-fastening strap adjusts to fit a range of swelling
- Cushioned Sanitized® insole can be removed to fit an orthotic
- Heel height 3.2cm (1¼")

**Sizes: 4 – 9** • *Half sizes available*

**extra roomy** 6E fitting

**Code HD**

**£82**

**£68.33** without VAT



HIDDEN  
DEPTH



DIABETIC  
FRIENDLY



STRAP EXTENSIONS  
AVAILABLE



**Ditsy  
Sparkle  
Leather**



**Black  
Cobalt  
Rose  
Leather**



**Black  
Croc  
Print  
Patent**



# FLATTER YOUR FEET

- > Cushioned footbed can be removed for extra depth or to fit an orthotic
- > Secure, touch-fastening strap adjusts to fit a range of swelling

NEW  
COLOUR



**Mulberry  
Apache**

**Black  
Apache**

## Koryl

Bring a touch of glamour to any outfit with this flattering shoe. The touch-fastening strap adjusts to fit a range of swelling while the cushioned footbed is removable for extra depth or to fit an orthotic.

*“Excellent shoes for my feet that are awkward due to diabetes. Will definitely be purchasing again.”*

FEEFO REVIEW

- > Stiffeners in heel area give a comfortable & secure fit
- > Seam-free front is ideal for sensitive toes

*bestseller*

NEW  
COLOUR

NEW  
COLOUR



Black Zebra  
Acrylic

Gold Snake  
Acrylic

Scarlett Zebra  
Acrylic

Sizes: 3 – 9 • No half sizes available • **extra roomy** 6E fitting

Code **G6** **£52** **£43.33** without VAT



DIABETIC  
FRIENDLY



STRAP EXTENSIONS  
AVAILABLE



MADE IN  
BRITAIN

# A SOFT & STRETCHY CASUAL

- > Cushioned footbed and additional insole can be removed for extra depth or to fit an orthotic
- > Secure, touch-fastening strap adjusts to fit a range of swelling
- > Coated with fabric protector so stain & water-resistant



## Spicy

Our neat-looking, water-resistant house shoe is made from elastane, so it stretches to accommodate bunions, hammer toes, bandaging and swelling with ease. Featuring a plush lining and cushioning for extra comfort, it provides both the softness of a fabric style along with the protection of a shoe.



 **STRETCHY  
ELASTANE**

**Sizes: 3 – 9** • No half sizes available • **extra roomy** 6E fitting

**Code H2**   **£59**   **£49.17** without VAT



DIABETIC  
FRIENDLY



STRAP EXTENSIONS  
AVAILABLE



MADE IN  
BRITAIN



**Latte Microfibre/Elastane**



**Loganberry Microfibre/Elastane**



**Black Microfibre/Elastane**

- > Secure, touch-fastening strap adjusts to fit a range of swelling
- > Stiffeners in heel area give a comfortable & secure fit
- > Cushioned footbed can be removed for extra depth or to fit an orthotic
- > Seam-free toe area is ideal for sore or swollen toes

*bestseller*



## Skye

This luxurious-looking style is plush and velvety to the touch. Combining the support of a shoe with the sumptuous, softness of a slipper it's the perfect choice if you have very sensitive feet. This versatile house shoe can be worn indoors if you need more support than a slipper, or outdoors on dry days.

**Sizes: 3 – 9**

No half sizes available

**extra roomy** 6E fitting

**Code G2**

**£49**

**£40.83** without VAT



**Grey**  
Microfibre



**Burgundy**  
Microfibre



**Navy**  
Microfibre



**Latte**  
Microfibre



**Black**  
Microfibre



**Mooch Damson**  
Wool-mix

**Mosey Turquoise**  
Wool-mix

**Mooch Jade**  
Wool-mix



- > Machine washable at 30°C on a wool delicate setting (Footbed not washable, remove before washing)
- > Flexible leather and TPU sole is suitable for indoor & outdoor wear
- > Small 'lip' around the heel of Mosey so less likely to slip off
- > Cushioned 'airflow' footbed can be removed to fit an orthotic
- > Wool-mix uppers & lining

## Mosey & Mooch

Slip into cosy comfort with our Purewool™ shoe and mule. Featuring a distinctively Scandinavian design, with TPU pads on the leather sole, they are perfect for wearing around the house, or nipping out during the day. The soft wool gently cossets the foot, moulding to fit your natural contours, as well as being moisture-wicking and naturally regulating temperature. Put them on in the morning and you'll forget you're wearing them by the afternoon!

**Sizes: 4 – 9** • No half sizes available  
**extra roomy** 6E fitting

**Mosey\***      **Code R8**  
**Mooch**      **Code R9**  
**£79**  
**£65.83** without VAT



\*Caution is advised with Mosey as this is a backless style



*bestseller*

## Shelley

Perfect if you suffer with hot feet but want your toes covered. The pretty punch detail and odour-resistant insole combine to keep feet cool and fresh. The adjustable strap, cushioned sole and super-soft lining add to the comfort of this flattering, easy-to-wear style.

**Sizes: 4 – 9** • Half sizes available  
**extra roomy** 6E fitting

**Code YB**

**£82**

**£68.33** without VAT



HIDDEN  
DEPTH



STRAP EXTENSIONS  
AVAILABLE



DIABETIC  
FRIENDLY

**Light  
Tan  
Leather**



**Stone  
Leather**



**Ocean  
Nubuck**



**Navy  
Leather**



- > Opens right out so easy to get on & off
- > Touch-fastening straps give a flexible fit for minor to very swollen feet
- > Punched leather uppers keep feet cool & comfy

*bestseller*



**Ocean**  
Nubuck



**Navy**  
Leather



**Taupe**  
Leather



**Black**  
Leather

## Connie

Lightweight, supportive and ultra-adjustable, our ever-popular Connie comfortably fits a range of swelling. The premium uppers are soft and kind while the spongy footbed and shock-absorbing sole give you blissful, underfoot comfort.

**Sizes: 3 – 9 • Half sizes available**  
**extra roomy** 6E fitting

**Code UH**

**£75**

**£62.50** without VAT



STRAP EXTENSIONS  
AVAILABLE

*\*Unless advised to avoid open-toed styles*

# STRETCH-TO-FIT SANDAL

- > Secure, touch-fastening straps adjust to fit swollen or misshapen feet
- > Closed back with padded collar for comfort & support
- > Opens out so it's easy to get on & off swollen feet



 **STRETCHY ELASTANE**

## Hop

Stretchy and super-soft, this sandal is brilliant at fitting bunions, misshapen feet and swelling, to provide a fit that feels truly made-to-measure. With a supportive back, enhanced underfoot cushioning, and a shock-absorbing sole this style is pure joy to wear.

**Sizes: 4 – 9 • Half sizes available**  
**extra roomy** 6E fitting

**Code ZM**  
**£75**  
**£62.50** without VAT



DIABETIC\* FRIENDLY



STRAP EXTENSIONS AVAILABLE

**Stone Floral**  
 Leather/  
 Elastane



**Navy**  
 Leather/  
 Elastane



**Taupe**  
 Leather/  
 Elastane



**Black**  
 Leather/  
 Elastane



*\*Unless advised to avoid open-toed styles*



*bestseller*

# SOFT, WARM, SUPPORTIVE

- > Slipper & insole machine washable at 30°C – separate slipper & insole prior to washing
- > Fabric gives to accommodate swelling, bunions & hammer toes



- > Cushioned insole can be removed for extra depth or to fit an orthotic

- > Flexible rubber sole is suitable for indoor & outdoor wear

## Holly

Our bestselling slipper is soft, yet supportive. With a cushioned insole for optimum underfoot comfort, it has a broad toe shape and is seam-free at the front making it ideal for problem or sensitive toes. It's machine washable, and the touch-fastening strap easily adjusts to fit a range of swelling.

**Sizes: 3 – 9** • No half sizes available

**extra roomy** 6E fitting

**Code F8   £42   £35** without VAT



*Holly in Navy can be purchased in half pairs & mixed sizes (ask for details)*

**Pink Check**  
Wool-mix



**Burgundy Trilobal**



**Plum Floral Trilobal**



**Navy Trilobal**



**Midnight Floral Trilobal**



# WRAP AROUND COMFORT

> Slipper & insole machine washable at 30°C – separate slipper & insole prior to washing

> Opens out so it's easy to get on

> Flexible rubber sole is suitable for indoor & outdoor wear

> Cushioned insole can be removed for extra depth or to fit an orthotic



**Wine  
Floral  
Trilobal**



**Midnight  
Floral  
Trilobal**



**Navy  
Trilobal**



**Plum  
Trilobal**

## Elise

Soft, warm and supportive, this traditional bootee slipper offers wrap-around comfort. The wide, touch-fastening strap adjusts to fit swelling and provides a secure fit around the ankle. Featuring a broad toe shape, with space for problem toes, it's also very comfy underfoot thanks to the soft, cushioned insole.

**Sizes: 3 – 9 • No half sizes available**  
**extra roomy** 6E fitting

**Code E4**

**£42**

**£35** without VAT



STRAP EXTENSIONS  
AVAILABLE



MADE IN  
BRITAIN

*Elise in Navy can be purchased in half pairs & mixed sizes (ask for details)*

# Diane

The perfect choice if you like to be able to slip your slippers on and off. Designed with a v-opening to accommodate swelling or bandaging, the touch-fastening strap can be pre-adjusted to fit a variety of foot shapes and sizes then it can simply be slipped on and off as needed. It also benefits from a broad seam-free toe area, removable cushioned insole and rubber sole suitable for indoor and outdoor wear.

**Sizes: 3 – 9 • No half sizes available**

**extra roomy** 6E fitting

**Code B10**

**£42**

**£35** without VAT



STRAP EXTENSIONS  
AVAILABLE



MADE IN  
BRITAIN

➤ Slipper & insole machine washable at 30°C



**Wine  
Floral  
Trilobal**



**Navy  
Trilobal**



**Plum  
Floral  
Trilobal**



**Jade  
Floral  
Trilobal**



**Plum  
Trilobal**



bestseller



## Amelia

This supportive house shoe style combines the comfort of a slipper with the support of a shoe. Twin touch-fastening straps offer a flexible fit, and the durable rubber sole is suitable for both indoor and outdoor use. Machine washable, it's ideal if you're active indoors but still want to feel relaxed and comfortable.

**Sizes: 3 – 9 • No half sizes available**  
**extra roomy** 6E fitting

**Code H3**

**£45**

**£37.50** without VAT



STRAP EXTENSIONS  
AVAILABLE



Navy Trilobal



Burgundy Trilobal

*“Comfortable.  
Excellent quality,  
superb fit and lovely  
and warm.”*

FEEFO REVIEW

# OUR ULTRA-ROOMY SLIPPER

> Slipper & insole machine washable at 30°C – separate slipper & insole prior to washing

> Cushioned insole can be removed to fit an orthotic

## Emma

Designed for extremely swollen or heavily bandaged feet, this versatile, wrap-around style has a touch-fastening strap at the back of the foot as well as across the top so it's fully adjustable. It opens out completely flat, so it's exceptionally easy to put on and can be 'rolled' up around the foot to give you a snug and secure fit. The deep, seam-free front accommodates swelling, bandaging, bunions and problem toes while the cushioned insole feels fabulous underfoot.



Plum Floral Trilobal



Navy Trilobal

**Sizes: 3 – 9** • No half sizes available • **extra extra roomy** fitting

**Code E10 £52 £43.33** without VAT



DIABETIC  
FRIENDLY



STRAP EXTENSIONS  
AVAILABLE



MADE IN  
BRITAIN

WE FIT FEET OTHERS CAN'T FIT™

- > Warm cushioned insole can be removed for extra depth or to fit an orthotic
- > Slipper & insole machine washable at 30°C – separate slipper & insole prior to washing
- > Adjustable touch-fastening strap helps provide a secure fit
- > Seam-free, so great for sensitive toes

**NEW  
COLOUR**



**NEW**



**Leopard  
Plush  
Velour**



**Fuchsia  
Floral  
Velour**



**French  
Navy Floral  
Velour**



**Burgundy  
Floral  
Velour**

## Snuggly

This beautifully soft, warm-lined slipper provides year-round warmth. Plush and velvety to the touch, it features a seam-free toe area and soft padded collar for extra comfort. The flexible rubber sole is suitable for indoor and outdoor use, while the touch-fastening strap adjusts to fit a range of swelling.

**Sizes: 3 – 9 • No half sizes available**

**extra roomy** 6E fitting

**Code J9**

**£49**

**£40.83** without VAT



DIABETIC  
FRIENDLY



MADE IN  
BRITAIN



STRAP EXTENSIONS  
AVAILABLE

# NESTLE IN SUPREME SOFTNESS

- > Slipper & insole machine washable at 30°C – separate slipper & insole prior to washing
- > Seam-free, so great for sensitive toes

NEW  
COLOUR



## Cuddly

Indulge your feet in luxury with our cosy slip-on style. This seam-free, warm-lined slipper is beautifully soft inside and out. The cosy collar provides added comfort to really give your feet a cuddle. The warm, removable cushioned insole allows for extra depth or can accommodate an orthotic.

Sizes: 3 – 9 • No half sizes available  
**extra roomy** 6E fitting

Code J8

**£49**

**£40.83** without VAT



NEW



Zebra Plush Velour



Beige Floral Velour



Burgundy Velour

# YEAR-ROUND WARMTH

## Dreamy

Cocoon cold feet in warmth and comfort with these ultra-soft slippers. The snuggly lining and bootee design are warm and insulating. Turn up the collar for extra warmth, to ensure feet and ankles stay cosy. The sumptuous, breathable uppers give a luxurious look and feel while the leather detail adds a stylish touch.

**Sizes: 3 – 9** • No half sizes available

**extra roomy** 6E fitting

**Code P2**

**£49**

**£40.83** without VAT



MADE IN  
BRITAIN



**Navy Floral  
Embroidered  
Acrylic**



**Camel  
Mock Suede**



**Loganberry  
Mock Suede**



- > Secure, touch-fastening straps adjust to fit swollen or misshapen feet
- > Opens right out so it's easy to slip on a very swollen foot
- > Machine washable at 30°C

*bestseller*

## Milly

This soft, cotton-mix slipper will help keep feet cool. Featuring a flexible, rubber sole, this style also works well as a sandal. The straps adjust to fit very swollen or bandaged feet, while the cushioned, towelling footbed offers great underfoot comfort.

**Sizes: 3 – 9** • No half sizes available • **extra roomy** 6E fitting

**Code H4**   **£42**   **£35** without VAT



DIABETIC  
FRIENDLY \*



STRAP EXTENSIONS  
AVAILABLE



MADE IN  
BRITAIN

*\*Unless advised to avoid open-toed styles*



Beige/Pink Floral Cotton-mix



Blue/Lilac Floral Cotton-mix



Navy Cotton-mix

# Jilly

Keep swollen feet comfy and cool, all year round, with these touch-fastening, cotton-mix slippers. Soft, secure and adjustable, they're cushioned underfoot for extra comfort and can double-up as a lightweight shoe if your feet are very sensitive.

**Sizes: 3 – 9 • No half sizes available**

**extra roomy** 6E fitting

**Code J1**

**£42**

**£35** without VAT



DIABETIC  
FRIENDLY



STRAP EXTENSIONS  
AVAILABLE



MADE IN  
BRITAIN



> Machine  
washable  
at 40°C



**Black** Cotton-mix



**Cream** Cotton-mix

# Sally

These, pretty cotton-lined slipper-shoes are ideal if you suffer with hot feet.

They're cushioned underfoot for extra comfort and are very easy to put on.

Simply pre-adjust the touch-fastening strap to fit your foot shape and slip them on.

**Sizes: 3 – 9 • No half sizes available**

**extra roomy** 6E fitting

**Code S1**

**£42**

**£35** without VAT



STRAP EXTENSIONS  
AVAILABLE



MADE IN  
BRITAIN

**Navy/Pink Floral**  
Cotton-mix



**Beige/Lilac Floral** Cotton-mix



**Navy** Cotton-mix



> Roomy, seam-free  
front is great for  
sensitive toes

> Machine  
washable  
at 40°C

# EMBRACE THE WONDERS OF WOOL

## purewool™

- > Touch-fastening strap adjusts to fit swelling
- > Cushioned 'airflow' footbed can be removed to fit an orthotic
- > Machine washable at 30°C on a wool delicate setting (Footbed not washable, remove before washing)



## Frieda

Stylish and supportive, our original Scandinavian-inspired slipper is beautifully soft and warm. Made from wool, it gently moulds to the shape of your foot for an incredibly comfy fit. Wool can also minimise odour, regulate temperature and wick away moisture to keep feet fresh and dry. Virtually seam-free, and very comfy underfoot, it's bliss for sensitive feet. The rubber soles can be worn outside.

**Sizes: 4 – 9** • No half sizes available

**extra roomy** 6E fitting

**Code R2**

**£79**

**£65.83** without VAT



**Feline**  
Wool-mix



**Charcoal Feline**  
Wool-mix



**French Navy**  
Wool-mix



**Light Grey**  
Wool-mix



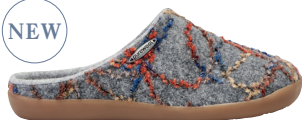
**Aubergine**  
Wool-mix



# LUXURIOUS COMFORT

## purewool™

- > Wool-mix uppers & lining
- > Small 'lip' around heel so less likely to slip off
- > Machine washable at 30°C on a wool delicate setting (Footbed not washable, remove before washing)



**Grey  
Multi  
Wool-mix**



**Sky Cable  
Knit  
Wool-mix**



**Midnight  
Feline  
Wool-mix**



**Purple  
Floral  
Wool-mix**



**\*Sheepskin  
Lined Ruby  
Wool-mix  
(not washable)**

## Donna

Encasing your feet in natural warmth and softness, this beautiful wool mule slipper features a cushioned insole that cossets your feet whilst encouraging generous airflow. For added luxury, choose our gorgeous sheepskin lined option enhancing the seam-free toe and making it ideal for sensitive feet.

**Sizes: 4 – 9 • No half sizes available**  
**extra roomy 6E fitting**

**Standard Lining Code R6**  
**£79 £65.83** without VAT

**\*Sheepskin Lined Code R7**  
**£99 £82.50** without VAT



HIDDEN  
DEPTH



DIABETIC\*  
FRIENDLY

*\*Unless advised to avoid backless styles*



## MEN'S FOOTWEAR

ALL OUR MEN'S STYLES ARE **extra roomy** 3H FITTING

# BOOTS MADE FOR WALKING

**CosyTex™**

- Cushioned 'airflow' footbed can be removed to fit an orthotic
- Padded collar fits both swollen & slimmer ankles
- Roomier than they look due to 'hidden depth' design
- Seam-free toe for extra comfort

Shoe  
version **Stanley**  
available  
Ask for details

## Livingstone

Whatever the weather, you can be sure your feet will be warm and protected with these CosyTex™ boots. Now with our High-Performance sole, the 'self-clearing' tread works extremely well in mud, ice and snow. The waxed leathers are water-repellent, while the breathable, windproof and 100% waterproof CosyTex™ membrane keeps feet fresh and dry.

**Sizes: 7 – 13** • Half sizes available  
**extra roomy** 3H fitting

**High-Performance**

**Code YLX**

**£155**

**£129.17** without VAT



HIDDEN  
DEPTH



DIABETIC  
FRIENDLY



**New High-Performance Bison**  
Waxed Leather



**New High-Performance Espresso**  
Waxed Leather

# Scott

Enjoy 100% waterproof protection along with all-round cushioning and a durable sole that's perfect for walking. This premium waxed, leather boot is also windproof and breathable, ensuring feet stay comfy, warm and dry. It's easy to slip on and off and offers great fitting flexibility thanks to the adjustable, touch-fastening strap. New colour Moorland has the added benefit of our High-Performance sole, which is ideal for more challenging terrains and weather conditions.

**Sizes: 7 – 13** • Half sizes available

**extra roomy** 3H fitting

**Standard Sole**

**Code SK**

**£149 £124.17** without VAT

**\*High-Performance Code SKX**

**£159 £132.50** without VAT



HIDDEN  
DEPTH



DIABETIC  
FRIENDLY



STRAP  
EXTENSIONS  
AVAILABLE



**Tan**  
Waxed Nubuck



**Black**  
Waxed Nubuck



**\*New**  
High-Performance  
Moorland  
Waxed Leather

**CosyTex™**





## Alex

The perfect casual boot, Alex is both roomy and supportive. Made from soft leather, it features a deep toe area with decorative stitching that can't be felt from the inside. With a wide opening and split padded collar, it's very easy to get on and off swollen feet and ankles.

- > Touch-fastening strap adjusts to fit a range of swelling
- > Cushioned 'airflow' footbed can be removed to fit an orthotic
- > Lightweight, hard-wearing sole offers good grip

**Sizes: 6 – 13**

*Half sizes available*

**extra roomy** 3H fitting

**Code UA**

**£105**

**£87.50** without VAT



**Oxblood  
Leather**



**Black  
Leather**



# FEEL THE COMFORT

*bestseller*

- > Secure, touch-fastening strap adjusts to fit swollen or misshapen feet
- > Softly padded across the instep & ankle for extra comfort & support
- > Cushioned 'airflow' footbed can be removed to fit an orthotic



## Elvis

Featuring a durable sole with good tread, this ultra-comfy casual is ideal if you're active on your feet. Deep and accommodating, it fits swollen feet with ease. With a seam-free front, it's perfect for sore or problem toes while the soft, high-quality leather completes the comfort.

**Sizes: 7 – 13** • Half sizes available

**extra roomy** 3H fitting

**Code KR**

**£105**

**£87.50** without VAT



HIDDEN  
DEPTH



DIABETIC  
FRIENDLY



STRAP EXTENSIONS  
AVAILABLE



**Bison Waxed Leather**



**Moorland Waxed Leather**



**Black Leather**

# COMFY CASUALS WITH HIDDEN DEPTH

- > Secure, lace-fastening can be adjusted for a flexible fit
- > Cushioned 'airflow' footbed can be removed to fit an orthotic
- > Sole is flexible, shock-absorbing & hard-wearing



## Max

This comfy, soft leather shoe is cleverly designed to fit swollen feet without compromising on style. It's very adjustable so it fits a variety of foot shapes and the tongue opens out so it's easy to put on.

*"Best shoes I've ever purchased."*

FEEFO REVIEW

**Sizes: 6 – 13** • Half sizes available

**extra roomy** 3H fitting

**Code FX**

**£99**

**£82.50** without VAT



**Brown Leather**



**Black Leather**

# Mason

A Cosyfeet best-seller, this comfy leather casual has been cleverly designed to accommodate swollen feet without compromising on style. It's very adjustable, so it fits a variety of foot shapes and swelling, and the tongue opens right out so it's very easy to put on.

- > Touch-fastening strap adjusts to fit swollen or misshapen feet
- > Sole is flexible, shock-absorbing & hard-wearing
- > Cushioned 'airflow' footbed can be removed to fit an orthotic

**Sizes: 6 – 13** • Half sizes available  
**extra roomy** 3H fitting

**Code FY**

**£99**

**£82.50** without VAT



HIDDEN  
DEPTH



STRAP  
EXTENSIONS  
AVAILABLE

**Brown**  
Leather



**Black**  
Leather



**Oxblood**  
Leather



*bestseller*





## Darby

Our handsome, roomy brogue is the perfect partner for work wear and formal wear. It has lots of room for swollen feet but still looks smart and streamlined. Crafted from soft, hand-finished leathers, it has a cushioned footbed and a lightweight, shock-absorbing sole for added comfort.

- > Cushioned 'airflow' footbed can be removed to fit an orthotic
- > Padded collar for extra comfort
- > Seam-free lining at front for problem toes
- > Deeper & roomier than it looks due to 'hidden depth' design

**Sizes: 6 – 13** • *Half sizes available*  
**extra roomy** 3H fitting

**Code QD**

**£105**

**£87.50** without VAT



**Cognac  
Leather**



**Black  
Leather**



# SMART STYLING

- > Cushioned 'airflow' footbed can be removed to fit an orthotic
- > Lining is seam-free at front so great for sensitive toes
- > Sole is light, shock-absorbing & hard-wearing

*bestseller*



*"Good quality, perfect fit and very comfortable."*

FEEFO REVIEW

## Jones

This smart yet soft leather shoe is very roomy. It has a deep, seam-free toe area so it's great for hammer toes, bunions and swelling. The fashionable, character stitching down the front can't be felt from the inside so you can still wear it if your feet are sore or sensitive.

**Sizes: 6 – 13** • Half sizes available  
**extra roomy** 3H fitting

**Code QJ**

**£105**

**£87.50** without VAT



**Brown Leather**



**Black Leather**

# EASY ON, EASY OFF

> Deep toe area is ideal for problem toes

> Sole is flexible, shock-absorbing & hard-wearing

> Fully padded tongue & collar give cushioned comfort

> Cushioned 'airflow' footbed can be removed to fit an orthotic

## Bart

A wonderfully comfy shoe, the twin touch-fastening straps open right out making it easy to get on and off, even for very swollen feet. A deep toe area and seam-free side panels make it ideal for sore or sensitive feet. The soft, but robust, premium leather completes the comfort.

**Sizes: 6 – 13** • Half sizes available

**extra roomy** 3H fitting

**Code YY**

**£105**

**£87.50** without VAT



HIDDEN  
DEPTH



STRAP EXTENSIONS  
AVAILABLE

*bestseller*



**Brown Leather**



**Black Leather**

- > Padded collar & tongue for extra comfort
- > Seam-free toe area is ideal for problem toes
- > Sole is lightweight, durable & flexible
- > Hand-brushed, antique-effect sole gives a premium look



Lace  
version Ashley  
available  
Ask for details

## Angus

This premium, sporty-looking shoe features twin touch-fastening straps which adjust to fit a variety of swelling as well as a high instep. It opens right out making it easy to get on and off a swollen foot, while the cushioned 'airflow' footbed can be removed to fit an orthotic. Available in a variety of colours, it's the perfect wardrobe staple.

**Sizes: 7 – 13** • Half sizes available

**extra roomy** 3H fitting

**Code GG**

**£105**

**£87.50** without VAT



STRAP EXTENSIONS  
AVAILABLE

**Navy  
Nubuck**



**Pecan  
Nubuck**



**Putty  
Nubuck**



**Denim  
Nubuck**



# Gregory

These soft, stretchy shoes give the support of a leather shoe with the seam-free comfort of a slipper. They're ideal for bunions or mis-shapen feet and won't put pressure on painful toes, joints or swelling.

**Sizes: 6 – 13**

No half sizes available

**extra roomy** 3H fitting

**Code UG**

**£92**

**£76.67** without VAT

**Brown  
Leather/  
Elastane**



HIDDEN  
DEPTH



DIABETIC  
FRIENDLY



STRETCHY  
ELASTANE



**Black Leather/Elastane**

# Patrick

This incredibly roomy, lightweight boot is designed to fit very swollen or bandaged feet and ankles. It's made from soft, stretchy elastane that won't put pressure on swelling and has a removable insole for extra room or to fit an orthotic.

**Sizes: 6 – 13**

No half sizes available

**extra extra roomy** fitting

**Code PM**

**£110**

**£91.67** without VAT

**Black  
Elastane/  
Leather**



DIABETIC  
FRIENDLY



STRAP EXTENSIONS  
AVAILABLE



STRETCHY  
ELASTANE

# STRETCH TO FIT COMFORT

> Cushioned 'airflow' footbed can be removed to fit an orthotic

> Secure, touch-fastening strap adjusts to fit swollen or misshapen feet

*bestseller*

> Padded tongue & collar give cushioned comfort

> Coated with fabric protector so stain & water-resistant

## Ken

This soft, stretchy shoe is ideal for a variety of foot problems. The elastane front provides made-to-measure comfort as it conforms to your individual foot shape whilst the touch-fastening offers ample adjustment.



↖ ↗  
↘ ↙ STRETCHY  
ELASTANE

**Sizes: 6 – 13** • No half sizes available **extra roomy** 3H fitting

**Code FM £92 £76.67** without VAT



HIDDEN  
DEPTH



DIABETIC  
FRIENDLY



STRAP EXTENSIONS  
AVAILABLE



Loam Leather/Elastane



Brown Leather/Elastane



Black Leather/Elastane

ALL OUR MEN'S FOOTWEAR IS **extra roomy** 3H FITTING

# TIMELESS CLASSICS

- > Touch-fastening strap gives a flexible fit for swollen feet
- > Hand-stitched apron provides extra give
- > Cushioned 'airflow' footbed can be removed to fit an orthotic

Lace up  
version **Will**  
available  
Ask for details



## Woody

This attractive, premium boat shoe fits swollen feet with ease thanks to the special 'hidden depth' design. It's crafted from luxury leathers that gently mould to your feet and lined with soft leather. The shock-absorbing, 'airflow' footbed adds to the exceptional comfort of this timeless classic.

Sizes: 6 – 13 • Half sizes available  
**extra roomy** 3H fitting

Code **VU**

**£105**

**£87.50** without VAT



Navy Nubuck/Leather



Tan Nubuck/Leather



Chestnut Leather



## New Ned

Designed for everyday use, this extremely comfy style is both smart and practical. Crafted from luxury leathers and nubucks, which mould to the feet, for a fit that is truly made-to-measure. The bellows tongue combined with a softly padded collar completes the comfort, while the touch-fastening strap is fully adjustable.

- Fully padded tongue & collar provide cushioned comfort
- Cushioned 'airflow' footbed can be removed to fit an orthotic
- Sole is lightweight, durable & flexible
- Deep seam-free toe area is ideal for problem toes

**Sizes: 7 – 12**

*Half sizes available*

**extra roomy** 3H fitting

**Code NED**

**£105**

**£87.50** without VAT



HIDDEN  
DEPTH



STRAP  
EXTENSIONS  
AVAILABLE

**Tan**  
Nubuck/  
Leather



**Black**  
Leather



# EASY, RELAXED STYLE

- > Deep, seam-free toe area is ideal for problem toes
- > Cushioned 'airflow' footbed can be removed to fit an orthotic
- > Sole is lightweight, durable & flexible



## Andrew

The twin touch-fastening straps on this contemporary, sporty-looking shoe can adjust to fit a range of swelling. Featuring a breathable mesh lining and an 'airflow' footbed, this casual style helps keep feet fresh. The underfoot cushioning and soft padded collar and tongue offer exceptional comfort.

**Sizes: 7 – 12**

No half sizes available

**extra roomy** 3H fitting

**Code A1**

**£82**

**£68.33** without VAT



HIDDEN  
DEPTH



DIABETIC  
FRIENDLY



STRAP  
EXTENSIONS  
AVAILABLE



MADE IN  
BRITAIN

*"Really good quality,  
very roomy, just like it  
says and very stylish."*

FEEFO REVIEW



Navy Canvas/Nubuck



Chocolate Canvas/Nubuck

# Matty

This casual style is made from a combination of leather and canvas, and features a clever zip fastening for easy access. Once the laces are adjusted to your fit, slip them on and off with ease. With stylish trainer-like detailing, you'll enjoy all-day comfort thanks to the seam-free toe, breathable lining and underfoot cushioning, topped off with a soft, padded tongue and collar.

**Sizes: 7 – 12**

*No half sizes available*

**extra roomy** 3H fitting

**Code A4**

**£82**

**£68.33** without VAT



HIDDEN  
DEPTH



DIABETIC  
FRIENDLY



MADE IN  
BRITAIN



**Navy Canvas/Nubuck**

# Matt

Update your seasonal look with this contemporary, leather and canvas casual. It combines practicality with a dash of style, thanks to the on-trend cup sole and sporty detailing. It's packed with special features to give you long-lasting comfort, including a seam-free toe, breathable lining and underfoot cushioning. A soft, padded tongue and collar add the finishing touch to this premium shoe.

**Sizes: 7 – 12**

*No half sizes available*

**extra roomy** 3H fitting

**Code A9**

**£82**

**£68.33** without VAT



HIDDEN  
DEPTH



DIABETIC  
FRIENDLY



MADE IN  
BRITAIN



**Grey  
Canvas/  
Nubuck**

*“Good fit. Good quality.  
Excellent.”*

FEFEO REVIEW

# Steven

Ideal for swollen or lightly bandaged feet, this touch-fastening style is very adjustable and easy to get on and off. The deep seam-free front is perfect for problem toes whilst the cushioned 'airflow' footbed can be removed to fit an orthotic.

**Sizes: 7 – 13**

No half sizes available

**extra roomy** 3H fitting

**Code A7**

**£59**

**£49.17** without VAT



**Bark  
Poly-weave**

> Shoe & footbed machine washable at 30°C – separate shoe & footbed prior to washing

> Lightweight rubber sole



HIDDEN  
DEPTH



STRAP EXTENSIONS  
AVAILABLE



MADE IN  
BRITAIN



**Charcoal Poly-weave**

# James

The stretchy front of this slipper-soft shoe makes it perfect for bunions, hammer toes, bandaging and swelling whilst the heel part is designed to provide support where required. The touch-fastening strap allows easy access and ample adjustment. Lightweight and ultra-comfy underfoot, it's perfect for indoor and outdoor wear.

**Sizes: 6 – 13\***

No half sizes available

**extra roomy** 3H fitting

**Code A3**

**£62**

**£51.67** without VAT



DIABETIC  
FRIENDLY



STRAP  
EXTENSIONS  
AVAILABLE



MADE IN  
BRITAIN



**Navy  
Elastane/Poly-weave**

> Stretchy elastane is coated with fabric protector so stain & water resistant



**Brown Elastane/Poly-weave**



**Black Elastane/Cotton**

\*Size 6 only available in Brown

# Bruno

Made from robust, hand-finished leathers, this sporty-looking sandal has twin touch-fastening straps which adjust to fit swelling. The flexible sole is great for active feet while the soft, cushioned footbed and stretchy lining offer exceptional comfort.

**Sizes: 7 – 13**

No half sizes available

**extra roomy** 3H fitting

**WE ADVISE YOU ORDER A SIZE SMALLER THAN YOUR NORMAL SHOE SIZE**

**Code VZ**

**£92**

**£76.67** without VAT



**Brown**  
Waxed Leather



*"I can walk further and more comfortably in these sandals."*

FEEFO REVIEW

# Bingley

This is our most supportive men's sandal. It has a closed back which gives good ankle support and allows you to wear an orthotic. The adjustable straps hold the foot securely in place while the cushioned footbed and shock-absorbing sole give great underfoot comfort.

**Sizes: 6 – 13** • No half sizes available

**extra roomy** 3H fitting

**WE ADVISE YOU ORDER A SIZE SMALLER THAN YOUR NORMAL SHOE SIZE**

**Code FO**

**£92**

**£76.67** without VAT



**Moorland**  
Waxed Leather



*\*Unless advised to avoid open-toed styles*



**Black Waxed Leather**



**Brown Waxed Leather**



> Supportive around the heel

> Cushioned insole can be removed for extra depth or to fit an orthotic

> Flexible rubber sole is suitable for indoor & outdoor wear

## Ronnie

A firm favourite, this roomy slipper is cushioned underfoot for greater comfort. A good choice for swollen feet thanks to the split at the front, and the seam-free toe area is ideal for problem toes. Easy to get on and off, you can pre-adjust the touch-fastening strap to fit your foot shape and simply slip it on.

**Sizes: 6 – 13** • No half sizes available  
**extra roomy** 3H fitting

**Code T8**

**£49**

**£40.83** without VAT



STRAP  
EXTENSIONS  
AVAILABLE



MADE IN  
BRITAIN



**Navy Plaid Wool-mix**



**Burgundy Check Acrylic**



**Charcoal Acrylic**

> Slipper & insole machine washable at 30°C – separate slipper & insole prior to washing. Navy Plaid Wool-mix not washable

# SOFT, SMART & SUPPORTIVE

- > Cushioned insole can be removed for extra depth or to fit an orthotic
- > Flexible, rubber sole is suitable for indoor & outdoor wear
- > Secure, touch-fastening strap adjusts to fit swollen or misshapen feet
- > Slipper & insole machine washable at 30°C – separate slipper & insole prior to washing



*bestseller*

## Reggie

This smart, supportive slipper is cushioned underfoot for even greater comfort. It adjusts to fit swelling and the front is seam-free and roomy so it's great for swollen or sensitive toes. Thanks to the luxury warm fabric, it feels beautifully soft and cosy.

**Sizes: 6 – 13** • No half sizes available

**extra roomy** 3H fitting

**Code T4**

**£49**

**£40.83** without VAT



DIABETIC  
FRIENDLY



MADE IN  
BRITAIN



STRAP EXTENSIONS  
AVAILABLE

**Burgundy  
Check**  
Acrylic



**Blue  
Tartan**  
Wool-mix



**Navy  
Russet  
Check**  
Acrylic



**Retro  
Check**  
Wool-mix





## Richie

This soft yet supportive slipper has a cushioned insole so it's very comfy underfoot. It has a broad toe shape and is seam-free at the front so it's ideal for problem or sensitive toes. The touch-fastening strap adjusts to fit a range of swelling.

- > Flexible rubber sole is suitable for indoor & outdoor wear
- > Slipper & insole machine washable at 30°C – separate slipper & insole prior to washing

**Sizes: 6 – 13** • No half sizes available  
**extra roomy** 3H fitting

**Code T1**

**£45**

**£37.50** without VAT



DIABETIC  
FRIENDLY



STRAP EXTENSIONS  
AVAILABLE



MADE IN  
BRITAIN

**Brown**  
Acrylic



**Charcoal**  
Acrylic



**Navy**  
Trilobal



*Richie in Navy can be purchased in half pairs & mixed sizes (ask for details)*

# WINTERPROOF YOUR FEET

- > Warm, cushioned insole can be removed for extra depth or to fit an orthotic
- > Flexible rubber sole is suitable for indoor & outdoor wear
- > Seam-free toe area is ideal for sensitive toes
- > Supportive around the heel



## Rudolph

This luxury, warm-lined slipper is a godsend if your feet feel the cold. The fleeced, faux fur lining gives you cosy comfort while the faux fur insole can be removed to give you extra depth.

**Sizes: 7 – 13** • No half sizes available

**extra roomy** 3H fitting

**Code Q2**

**£52**

**£43.33** without VAT



DIABETIC  
FRIENDLY



MADE IN  
BRITAIN



STRAP EXTENSIONS  
AVAILABLE

**Ink Tartan**  
Wool-mix



**Navy Marl Knit**  
Acrylic



**Navy Teal Tartan**  
Wool-mix



**Woodland Check**  
Wool-mix





- > Secure, touch-fastening strap adjusts to fit swollen or misshapen feet
- > Slipper & insole machine washable at 30°C – separate slipper & insole prior to washing
- > Flexible rubber sole is suitable for indoor & outdoor wear

## Robbie

Warm and supportive, this soft, adjustable bootee features wrap-around comfort. Thanks to the cushioned insole, it's blissfully soft underfoot. The broad toe area has ample space for problem toes, and it opens right out making it easy to get on, even if your feet are very swollen. For feet that feel the cold, try our warm-lined version.

**Sizes: 6 – 13** • No half sizes available  
**extra roomy** 3H fitting

**Standard Lining Code M5**  
**£49 £40.83** without VAT

**\*Warm-lined Code M7**  
**£52 £43.33** without VAT



**Navy Russet Check**  
Acrylic



**Charcoal**  
Acrylic



**\*Warm-lined Retro Check**  
Wool-mix

*Robbie in Charcoal can be purchased in half pairs & mixed sizes (ask for details)*



EASY TO WEAR,  
EASY TO LOVE

purewool™

## Benny

An easy-on Scandi-style mule slipper that pampers your feet in the natural warm softness of wool. The cushioned footbed complements the indulgent features of this slipper whilst promoting generous airflow to wick away moisture and minimise odour. A simple, yet premium design capable of accommodating a variety of foot conditions. Also available in a luxurious sheepskin lined option.

- > Machine washable at 30°C on a wool delicate setting  
(footbed not washable, remove before washing)

**Sizes: 7 – 12** • No half sizes available

**extra roomy** 3H fitting

**\*Sheepskin Lined Code W7**

**£99 £82.50** without VAT

**Standard Lining Code W6**

**£85 £70.83** without VAT



*\*Unless advised to avoid backless styles*

**\*Sheepskin  
Lined Imperial**  
Wool-mix  
(not washable)



**Navy Marl Knit**  
Wool-mix



**Brown  
Cable Knit**  
Wool-mix



# Jonny

This lightweight, open-toed style is ideal if you have problem toes or bandaged feet. It's very adjustable and supportive around the heel and is easy to put on a swollen foot. The acrylic version works well as a slipper-shoe while the leather version is ideal for wearing outdoors.

**Sizes: 6 – 13** • *No half sizes available*

**extra extra roomy** fitting

**Acrylic Code QZ**

**£65**

**£54.17** without VAT

**Leather Code QY**

**£92**

**£76.67** without VAT

**Charcoal  
Acrylic**



> Cushioned & softly-lined for comfort



**Brown Acrylic**



**Black Leather**

# Rowan

With an extra low opening so it's easy to put on, Rowan is designed to fit exceptional swelling or heavy bandaging and is suitable for both men and women. As the sole is EVA and the back is less supportive than our other styles, it may not be suitable if you're very active.

**Sizes: 5 – 13**

*No half sizes available*

**extra extra roomy** fitting

**Burgundy  
Suede**



**Suede Code XW**

**£69**

**£57.50** without VAT

**Leather Code XY**

**£79**

**£65.83** without VAT



**Navy Suede**



**Black Leather**

# AN ULTRA-ADJUSTABLE SLIPPER FOR VERY SWOLLEN FEET



## Ernest

This versatile, wrap-around style is designed to fit extremely swollen or heavily bandaged feet. It has a touch-fastening strap at the back of the foot as well as across the top so it's fully adjustable. It's really easy to put on as it opens out completely flat and can then be 'rolled up' around the foot to give a snug and secure fit. The deep, seam-free front accommodates swelling, bandaging, bunions and problem toes with ease while the cushioned insole adds to the comfort.

**Sizes: 7 – 13** • No half sizes available • **extra extra roomy** fitting

**Code M2**   **£55**   **£45.83** without VAT



DIABETIC  
FRIENDLY



STRAP EXTENSIONS  
AVAILABLE



MADE IN  
BRITAIN



Navy Trilobal



Charcoal Acrylic



# THE MOST COMFORTABLE SOCKS YOU'LL EVER WEAR

Beautifully crafted and made to last, most of our socks are made in England by a family-owned business. Our suppliers use premium yarns and time-honoured techniques to create beautiful quality socks.



## **extra roomy** FITTING

Exceptionally comfy and made with more material in the foot and leg area, our exclusive extra roomy fitting

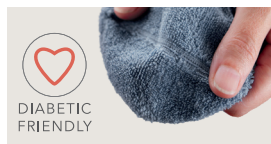
is easy to get on and off a swollen foot.



## COMFORT GRIP

The grippy cuff on these clever socks keeps them comfortably but firmly in place without exerting

pressure, leaving indents or cutting off circulation.



## SEAM-FREE

Ideal if you have diabetes, sensitive feet or just want to feel really comfy.

Designed to stay up without cutting in or restricting circulation these socks have a smooth join at the toe that won't rub or irritate.



## **Softhold®** TOP

With a relaxed fit you'll hardly know you're wearing these comfy socks.

The special ribbed design

holds them securely but gently in place, so they don't cut in, restrict circulation or leave nasty marks.

## EXCEPTIONALLY SWOLLEN FEET & LEGS?

Take a look at pages 87 and 91 for the roomiest socks and hosiery in our range.





ENJOY WARMTH & SOFTNESS

# MERINO WOOL

Forget itchy, heavy wool. Our fabulous Merino socks are soft and lightweight. Naturally warm in winter and cool in summer they have excellent wicking to keep feet dry and are breathable and antimicrobial. Your feet will love them!

## New Wool-rich Softhold® Seam-free

This soft, lightweight sock is made from fine-gauge Merino wool so it's warm without being bulky and won't take up room in your shoes. It's super-stretchy for a comfy fit and is naturally breathable so your feet stay fresh and dry. The Softhold® top won't dig in so all you feel is blissful comfort, while the smooth join at the toe won't rub or irritate sensitive feet. Thanks to its natural climate control, it's a perfect sock for all seasons.

	COLOUR	SIZE		
		S 4-7	M 6-11	L 11-13
	Burgundy	✓	✓	✓
	Black	✓	✓	✓
	Oatmeal	✓	✓	✓
	Navy	✓	✓	✓

### 3 PAIR PACK SINGLE COLOUR

Standard Fit **Code WRS £25**

**extra roomy** **Code WRX £26**



#### Calf Length

72% Merino wool,  
23% Nylon,  
5% LYCRA®



DIABETIC  
FRIENDLY



MADE IN  
BRITAIN



**Calf Length**

72% Merino wool,  
27% Nylon,  
1% LYCRA®



DIABETIC  
FRIENDLY



MADE IN  
BRITAIN

**2 PAIR PACK SINGLE COLOUR**

Standard Fit **Code FQ £24.50**

**extra roomy** Code FN **£26**

## Wool-rich Softhold® Seam-free Cushioned Sole

This is a fantastic sock if you have diabetes or sensitive feet. It's gently cushioned on the sole, toe and heel for added protection and the smooth join at the toe won't rub or irritate. Made from soft, warm, lightweight Merino wool, the Softhold® top won't dig in so all you feel is blissful comfort. Our extra roomy option is ideal for swollen legs.

	COLOUR	SIZE	
		S 4-7	M 6-11
	Blue Marl	✓	✓
	Oatmeal	✓	✓
	Grey	✓	✓

**Knee Length**

70% Merino wool,  
28% Nylon,  
2% LYCRA®



MADE IN  
BRITAIN

## Wool-rich Knee High

Enjoy cosy, knee high warmth and comfort with this soft, lightweight sock. Made with fine Merino wool, it's warm without being thick or itchy and stretchy for enhanced comfort. Our extra roomy option is ideal for swollen legs.

**Please note:**

Knee highs may not  
accommodate extreme swelling

	COLOUR	SIZE		
		S 4-7	M 6-11	L 11-13
	Oatmeal	✓	✓	✓
	Navy	—	✓	—
	Grey	—	✓	—
	Black	✓	✓	✓

**1 PAIR PACK SINGLE COLOUR**

Standard Fit **Code BY £16.50**

**extra roomy** Code BX **£17.50**



### Knee Length

60% Merino wool,  
39% Nylon,  
1% LYCRA®



DIABETIC  
FRIENDLY



MADE IN  
BRITAIN



### Calf Length

60% Merino wool,  
39% Nylon,  
1% LYCRA®



MADE IN  
BRITAIN



## Thermal Softhold® Seam-free Knee High

If you suffer from cold feet and legs, then this cosy sock is the one for you! With added warmth from the soft, heavier-gauge wool, it comes up to the knee so it's perfect for colder days. The smooth join at the toe is kind to tender feet and the Softhold® top won't dig in so it's exceptionally comfy to wear. Our extra roomy option is ideal for swollen legs.

#### Please note:

Knee highs may not  
accommodate extreme swelling

COLOUR		SIZE		
		S 4-7	M 6-11	L 11-13
	Oatmeal	✓	✓	✓
	Black	✓	✓	✓
	Navy	—	✓	—

#### 1 PAIR PACK SINGLE COLOUR

Standard Fit **Code TQ £18**

**extra roomy Code TF £19**

## Thermal Softhold®

Made from a high percentage of Merino wool these snugly socks are thicker than our wool-rich socks and will keep toes toasty. The Softhold® top won't dig in and the stretchy LYCRA® fibre enhances the fit and comfort. Our extra roomy option is ideal for swollen legs.

COLOUR		SIZE		
		S 4-7	M 6-11	L 11-13
	Moss	—	✓	—
	Black	✓	✓	✓
	Oatmeal	✓	✓	✓
	Grey	—	✓	—
	Navy	✓	✓	✓

#### 3 PAIR PACK SINGLE COLOUR

Standard Fit **Code TH £26**

**extra roomy Code ET £27.50**



### Calf Length

78% Cotton,  
20% Nylon,  
2% LYCRA®



MADE IN  
BRITAIN

bestseller

## KEEP FEET COOL, DRY & COMFY

### Cotton-rich Softhold®

This is a beautifully-comfy, lightweight sock. Thanks to the Softhold® top, it won't cut in, restrict circulation or leave nasty marks. It's super-soft against your skin and the underfoot ventilation panel keeps feet cool and dry. It's hard-wearing, due to the nylon and stretchy for added comfort. Our extra roomy option is ideal for swollen legs.

*"Soft and comfortable for swollen legs, cosy and lovely colour."*

FEEFO REVIEW

#### 3 PAIR PACK SINGLE COLOUR

Standard Fit **Code CR £19**

**extraroomy Code EC £20.50**

	COLOUR	SIZE		
		S 4-7	M 6-11	L 11-13
	Aubergine	✓	✓	—
	Maize	✓	✓	—
	White	✓	✓	✓
	Lilac	✓	—	—
	Ultramarine	✓	✓	✓
	Grey	—	✓	✓
	Navy	✓	✓	✓
	Crimson	✓	✓	—
	Oatmeal	✓	✓	✓
	Black	✓	✓	✓
	Denim	✓	✓	—



**Calf Length**  
98% Cotton,  
2% LYCRA®



DIABETIC  
FRIENDLY



MADE IN  
BRITAIN

*bestseller*



## Cotton-rich Softhold® Seam-free

This fine-gauge sock is so incredibly light, soft and comfy you'll forget you're even wearing it! Made for the fussiest of feet, it's super-stretchy for a perfect fit and has a smooth join at the toe that won't rub or irritate. The Softhold® top holds it gently in place and won't cut in or leave nasty marks. It wears well, washes well and won't take up room in your shoes. Our extra roomy option is ideal for swollen legs.

COLOUR		SIZE		
		S	M	L
		4-7	6-11	11-13
	Beige	✓	✓	✓
	Black	✓	✓	✓
	Coffee	✓	✓	—
	Grey	✓	✓	—
	Navy	✓	✓	✓

3 PAIR PACK SINGLE COLOUR

Standard Fit **Code DI £24.50**  
**extra roomy Code DE £26**



**Calf Length**  
98% Cotton,  
2% LYCRA®



DIABETIC  
FRIENDLY



## Simcan Comfort

This is a really comfy cotton-rich sock! It's very stretchy so it gently moulds to all sorts of leg shapes and sizes. It stays up without sagging, cutting in or restricting your blood flow and has a smooth join at the toe for extra comfort. It's also easy to put on and take off a swollen foot.

COLOUR		SIZE		
		S	M	L
		4-7	7-11	11-14
	White	✓	✓	✓
	Oatmeal	✓	✓	✓
	Charcoal	✓	✓	✓
	Black	✓	✓	✓
	Navy	✓	✓	✓

3 PAIR PACK SINGLE COLOUR

Standard to roomy Fit  
**Code CA £27**

**Calf Length**

70% Cotton,  
26% Merino wool,  
3% Nylon,  
1% Elastane



DIABETIC  
FRIENDLY



MADE IN  
BRITAIN



2 PAIR PACK SINGLE COLOUR

Standard to **extra roomy** Fit

Code RY **£21.50**

## Supreme Comfort

Luxury cotton & Merino wool

We think we've discovered the perfect sock! A blend of soft Merino wool and premium cotton, it's the ultimate in comfort. Super-stretchy for a superb fit, it even fits very swollen legs. It stays up gently without digging in and the smooth join at the toe won't rub your feet. It's soft to the touch but hard-wearing and the breathable yarn keeps feet fresh and dry.

	COLOUR	SIZE		
		S 4-7	M 6-11	L 11-13
	Navy	✓	✓	✓
	Oatmeal	✓	✓	✓
	Charcoal	✓	✓	✓
	Black	✓	✓	✓

**Calf Length**

90% Cotton,  
9% Nylon,  
1% LYCRA®



DIABETIC  
FRIENDLY



MADE IN  
BRITAIN



## Cotton Comfort

If you have diabetes, vascular disorders or circulatory problems, it's important to wear the right sock. This one is specially formulated to protect vulnerable feet against irritation, chafing or pressure which can cause sores and ulcers. Soft and exceptionally comfy, it's made from the finest combed cotton to keep feet dry and prevent skin infections.

	COLOUR	SIZE			
		S 4-7	M 6½-8½	L 9-11	XL 11-13
	Grey	✓	✓	✓	✓
	Black	✓	✓	✓	✓
	Oatmeal	✓	✓	✓	✓

2 PAIR PACK SINGLE COLOUR

Standard to **roomy** Fit

Code DCS **£21.50**

# THE ROOMIEST SOCKS IN OUR RANGE

## Fuller Fitting Socks

These amazing, ultra-roomy socks are super-stretchy, fitting very large, swollen or bandaged legs with ease. Soft and exceptionally comfy, the ribbed design holds them up securely without digging in, causing pressure or restricting circulation. They also have a smooth join at the toe which won't rub tender toes or skin. Our new Wool-rich version features a high content of Merino wool, which is both soft and lightweight. With natural climate control, they ensure your feet remain at a comfortable temperature, whatever the weather.

**Thermal option available**  
Ask for details

> Maximum circumference 80cm

*bestseller*

## Fuller Fitting Socks

	COLOUR	SIZE		
		S 4-7	M 6½-8½	L 9-11
	Oatmeal	✓	✓	✓
	Black	✓	✓	✓

**Knee Length & Calf Length** 87% Cotton, 11% Nylon, 2% LYCRA®

## New Wool-rich Fuller Fitting Socks

	COLOUR	SIZE		
		S 4-7	M 6½-8½	L 9-11
	Oatmeal	✓	✓	✓
	Black	✓	✓	✓

**Knee Length** 87% Fine Merino wool, 11% Nylon, 2% LYCRA®

### 1 PAIR PACK SINGLE COLOUR

**Knee Length** **extraextraroomy**

Code FFS **£22**

**Calf Length** **extraextraroomy**

Code FFM **£19.50**

### 1 PAIR PACK SINGLE COLOUR

**Knee Length** **extraextraroomy**

Code FFW **£22**



### Calf Length

70% Acrylic,  
30% Nylon



MADE IN  
BRITAIN

*bestseller*



2 PAIR PACK SINGLE COLOUR

Standard Fit **Code BS £17.50**

**extra roomy** **Code EB £18.50**

## Super-soft Bed Socks

Enjoy a comfy and cosy night's sleep. Ideal for anyone with poor circulation, these snugly socks keep the coldest feet warm. The brushed yarn is luxuriously soft while the loose top around the ankle offers extra comfort. Our extra roomy option is a great fit for swollen feet and legs.

COLOUR		SIZE		
		S 4-7	M 8-11	L 11-13
	Silver	✓	✓	—
	Blush	✓	✓	—
	Ivory	✓	✓	—
	Charcoal	—	✓	✓
	Marine	—	✓	✓

### Ankle Length

91% Cotton,  
7% Nylon,  
2% Elastane



MADE IN  
BRITAIN

*bestseller*



## Gripped Socks

Our super-comfy gripped socks are perfect for padding around the house or snuggling on the sofa. With slip-resistant tread and a sumptuously-soft terrycloth lining these socks are perfect for keeping feet cosy and warm. There's nothing to rub or irritate, thanks to the smooth join at the toe, and the loose top around the ankle offers extra comfort.

COLOUR		SIZE		
		S 4-7	M 6½-8½	L 9-11
	Berry	✓	✓	✓
	Bright Navy	✓	✓	✓
	Charcoal	✓	✓	✓

1 PAIR PACK SINGLE COLOUR

Standard to **roomy** Fit

**Code GSS £14**



MOST STYLES  
AVAILABLE IN  
**STANDARD &  
extra roomy**  
FITTINGS

## ULTRA-COMFY HOSIERY FOR EVERY SHAPE & SIZE

Hosiery that doesn't cut off your circulation, won't sag or fall down and is long enough in the legs and roomy enough in the thighs and waist. Made exclusively for Cosyfeet, our hosiery is designed to fit you perfectly.



### **extra roomy** FITTING

Our extra roomy hosiery is made on larger cylinders using more material so it's roomy throughout. This gives an exceptionally generous and comfortable fit and is ideal if you have swollen or shapelier legs.



### **Softhold®** TOP

Traditional hosiery can sometimes feel tight or dig in. Our ultra-comfy Softhold® hosiery stays up gently but securely without pinching, cutting in or restricting your circulation.

### **ULTRA ROOMY**

The roomiest hosiery in our range, designed for exceptionally swollen feet and legs. *See page 91.*

### ***Petite*** FITTING

Designed for people under 160cm (5'3") in height. *See pages 94 & 95.*

### **XXXLARGE** TIGHTS

Our Everyday Tights are available in XXXLarge which fits hips up to 229cm (90"). *See page 95.*



**Fibre content**  
60% Cotton,  
40% Polyamide

## Seam-free Foot Socks

Our premium foot socks hide discreetly in your footwear to give you a barefoot look. Seam-free and super-soft, they're a pleasure to wear, especially if your feet are sensitive. They're also cotton-rich to keep feet cool. The patented 'comfort band' keeps them on securely without digging in for an exceptionally comfy fit. Our extra roomy version is perfect if you have swollen feet.

### 40 Denier

4 PAIR PACK OF ONE COLOUR



Natural

Standard Fit  
(fits all shoe sizes)

**Code STFSX £11**

**extra roomy**  
(fits all shoe sizes)

**Code XRF SX £12**



**Fibre content**  
96% Nylon,  
4% LYCRA®

## Softhold® Premium Ankle Highs

When we say these are the comfiest ankle highs we've ever tried, we're not exaggerating! They don't dig in or restrict circulation thanks to our Softhold® top that holds them gently but firmly in place. Soft but hard-wearing, the added LYCRA® fibre ensures comfort, freedom of movement and a superb fit. And with 6 pairs in a pack, they're great value for money. Our extra roomy version is perfect for swollen feet and ankles.

### 15 Denier

6 PAIR PACK OF ONE COLOUR



Natural



Mink



Chiffon



Black

Standard Fit  
(fits all shoe sizes)

**Code NAS £12**

**extra roomy**  
(fits all shoe sizes)

**Code NAW £13**

## Softhold® Ultra-roomy Ankle Highs

These ultra-roomy ankle highs are designed to fit very large or swollen legs and ankles so they're ideal if you have oedema (fluid retention) or lymphoedema. Made from a soft but hard-wearing high-quality knit, they're exceptionally comfy and very stretchy so you'll find them easier to put on. Thanks to our Softhold® top, that holds them gently but firmly in place, they won't dig in or restrict your circulation so all you feel is blissful comfort.

### 30 Denier

3 PAIR PACK OF ONE COLOUR



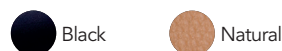
**extraextraroomy** Code URA **£13.50**



## Softhold® Ultra-roomy Knee Highs

These are the roomiest knee highs in our range. Designed to fit very large or swollen legs, they're ideal if you have oedema (fluid retention) or lymphoedema. Made from a soft, high-quality knit, they're exceptionally comfy and very stretchy so you'll find them easier to put on. A pleasure to wear all day, they won't sag or fall down thanks to the comfort band that holds them gently but firmly in place.

3 PAIR PACK OF ONE COLOUR



**40 Denier** **extraextraroomy**

Code URF **£15**

**80 Denier** **extraextraroomy**

Code URE **£15**





## Opaque Knee Highs

These premium-quality knee highs are a joy to wear. They feel wonderfully soft and smooth and have an elegant, silky sheen finish. The 3D technology by LYCRA®, renowned for its remarkable stretch, gives you greater freedom of movement along with enhanced comfort and fit.

### Fibre content

#### Grey Marl

95% Nylon, 5% LYCRA®

#### Black, Navy & Burgundy

90% Nylon, 10% LYCRA®

### 80 Denier

3 PAIR PACK OF ONE COLOUR



Grey Marl



Navy



Black



Burgundy

Standard Fit **Code NOK £12**

**extraoomy** Code NXK **£13.50**



## Softhold®

## Light Support Knee Highs

Featuring LEG CARE technology by LYCRA® brand, which provides a gentle, graduated massage action that's clinically proven to improve circulation and reduce leg fatigue. The Softhold® top ensures they stay up comfortably without digging in.

### Fibre content

90% Nylon,

10% LYCRA®

### 40 Denier

3 PAIR PACK OF ONE COLOUR



Natural



Mink



Chiffon



Black

Standard Fit **Code VE £12**

**extraoomy** Code NTK **£13**

**extra roomy**

## Everyday Knee Highs

Ideal for swollen legs, these hard-wearing knee highs are roomier throughout giving you an exceptionally generous and comfy fit. The wide band provides extra comfort and won't cut into swollen legs.

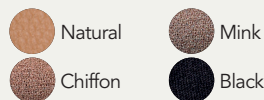
*bestseller*



**20 Denier**

**6 PAIR PACK OF ONE COLOUR**

**Fibre content**  
100% Nylon



**extra roomy** Code **NPP** **£11.50**



**Softhold®**

## Premium Knee Highs

The Softhold® top holds them gently but firmly in place without digging in or restricting your circulation. Stretchy LYCRA® fibre gives you freedom of movement and an improved fit.

*"Perfect fit and colour, would purchase again."*

FEEFO REVIEW

**20 Denier**

**3 PAIR PACK OF ONE COLOUR**

**Fibre content**  
96% Nylon,  
4% LYCRA®



Standard Fit Code **NHP** **£11.50**

**extra roomy** Code **NHX** **£13**



## Softhold® Premium Hold-ups

These premium-quality hold-ups are exceptionally comfy. Our unique Softhold® top keeps them gently but firmly in place without digging in or restricting circulation so all you feel is blissful comfort. They're sumptuously soft with stretchy LYCRA® fibre, that lets you move freely and enhances the comfort and fit. Our extra roomy version is perfect for swollen or shapelier legs.

### 20 Denier

2 PAIR PACK OF ONE COLOUR



Black



Mink



Chiffon



Natural

Standard Fit

Code **NHS** **£11.50**

**extraroomy**

Code **NHH** **£13**

### 30 Denier

2 PAIR PACK OF ONE COLOUR



Natural



Mink



Chiffon

Standard Fit

Code **NHU** **£11.50**

**extraroomy**

Code **NST** **£13**



### 30 Denier *Petite*

Ideal for those 160cm (5'3") or under in height

2 PAIR PACK OF ONE COLOUR



Natural



Chiffon

Standard Fit

Code **NPH** **£11.50**

**extraroomy**

Code **NPS** **£13.50**

## extraroomy Everyday Tights

Made on a larger cylinder than standard hosiery, these run-resistant tights are roomier throughout. This means they're long enough in the leg and big enough around the thighs and waist, providing an exceptionally generous and comfy fit.

bestseller

### 20 Denier

3 PAIR PACK OF ONE COLOUR



extraroomy Code NRR **£14**

Available in S\*, M, L, XL, XXL – see size chart below \*Size Small only available in Natural  
NRR ALSO AVAILABLE IN XXXLARGE which fits hips up to 229cm (90") in Natural & Black only

### 20 Denier Petite

3 PAIR PACK OF ONE COLOUR



extraroomy Code NPR **£13**

Ideal for those 160cm (5'3") or under in height.

**Fibre content**  
100% Nylon

## Softhold® Warm Ribbed Tights

Knitted from SUPPLEX®, a clever fibre that keeps legs warm but still lets skin breathe. Stretchy throughout for a beautiful fit, the deeper-than-average waistband provides extra comfort.

### 80 Denier

2 PAIR PACK OF ONE COLOUR



Standard Fit Code KT **£23**  
extraroomy Code KX **£24.50**

Available in S\*, M, L, XL, XXL\* – see size chart below  
\*Size S & XXL only available in Natural and Black



**Fibre content**  
60% SUPPLEX®,  
35% Nylon,  
5% LYCRA®



## TIGHTS SIZE CHART

If you have **swollen legs** we recommend our **extraroomy** fitting. Otherwise choose our standard fitting. You will also need to choose your size according to your hip or dress size.

**PLEASE NOTE:** Large and XLarge have a **half back panel gusset**. XXL and XXXL have a **full back panel gusset** which allows more room and enhances the comfort and fit. Our Everyday Tights are available in XXXL – see above for details.

	HIP SIZE	DRESS SIZE
SMALL	107cm (42")	Up to size 16
MEDIUM	122cm (48")	18 – 20
LARGE	142cm (56")	22 – 26
XLARGE	163cm (64")	28 – 32
XXLARGE	183cm (72")	32+

# BRILLIANT BOOTS

PG 6 – 12



# STAY WARM & COSY

PG 40 – 52



See our  
Socks &  
Hosiery  
pg 80 - 95



**Your local stockist is:**

**Advance Electrical Mobility,  
4 Crumlin Village,  
Dublin 12  
Ireland  
Phone: +353 1 4553168  
Fax: +353 1 4550763  
Email: [info@aemobility.com](mailto:info@aemobility.com)**

**YOUR STOCKIST MAY NOT KEEP ALL THE ITEMS YOU  
CAN SEE IN THIS CATALOGUE. PLEASE CONTACT  
THEM TO CHECK THEY HAVE WHAT YOU WANT.**